

# Universal Accessibility



## We are driven by your solidarity

We have an 104-million-euro budget; the contribution by our founder, ONCE, is our main source of income, together with our alliance with the European Social Fund and contributions by other institutions.



## Transparency as a value

The ONCE Foundation certifies the veracity of these data through the audits conducted by the most recognized entities in the sector (EY and PWC).

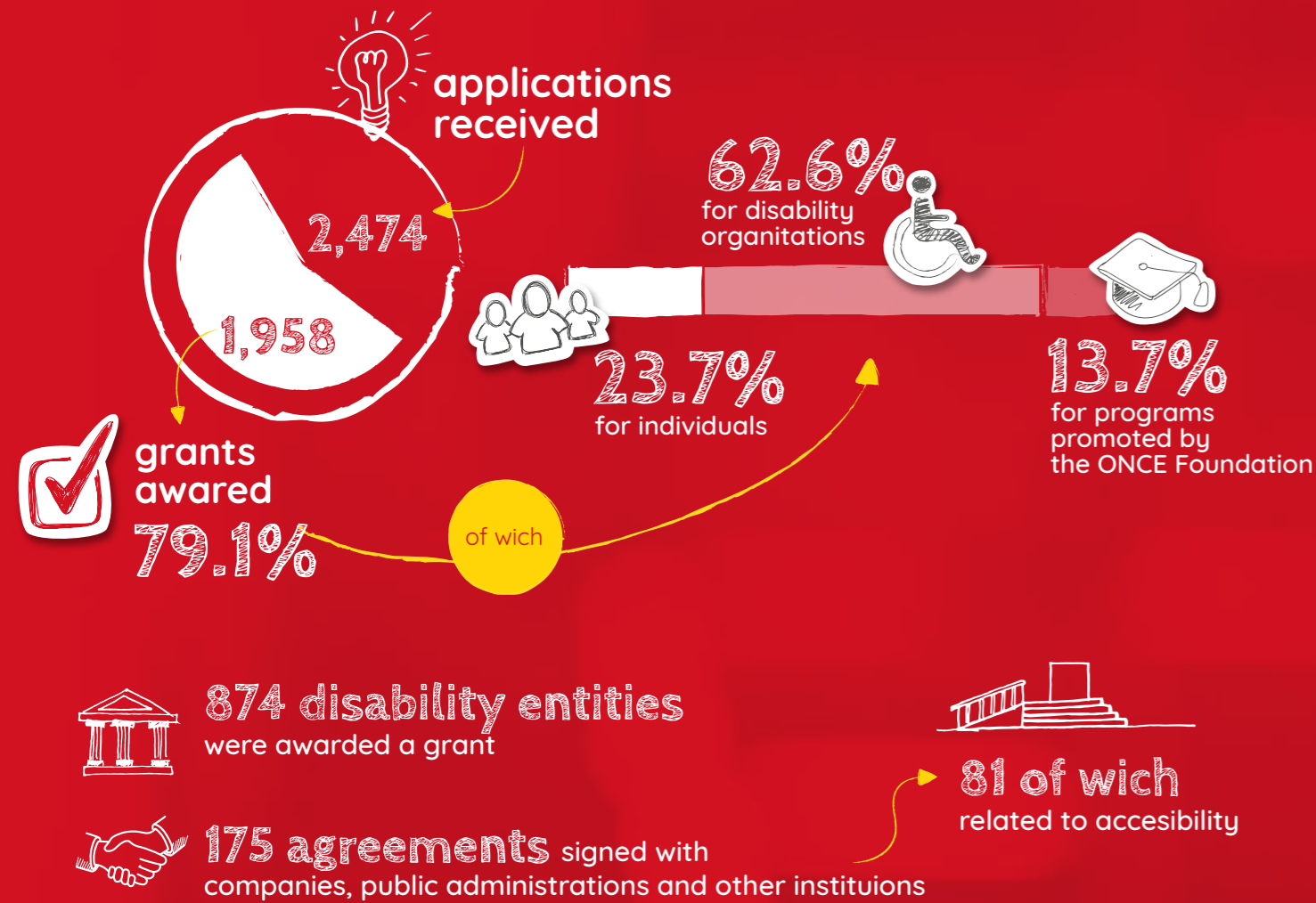
social group **ONCE**



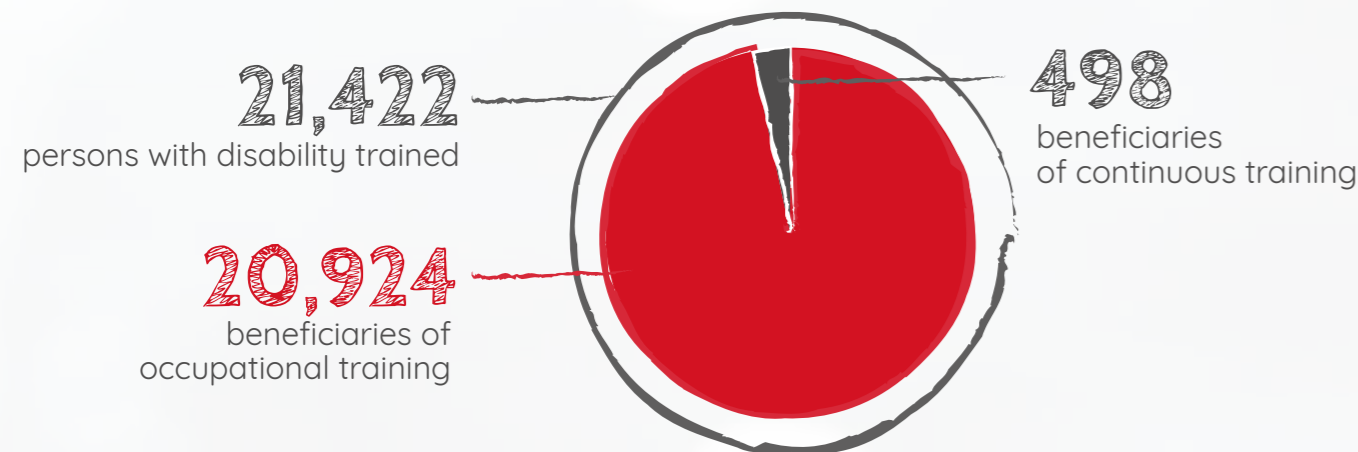
ACCESSIBLE PDF



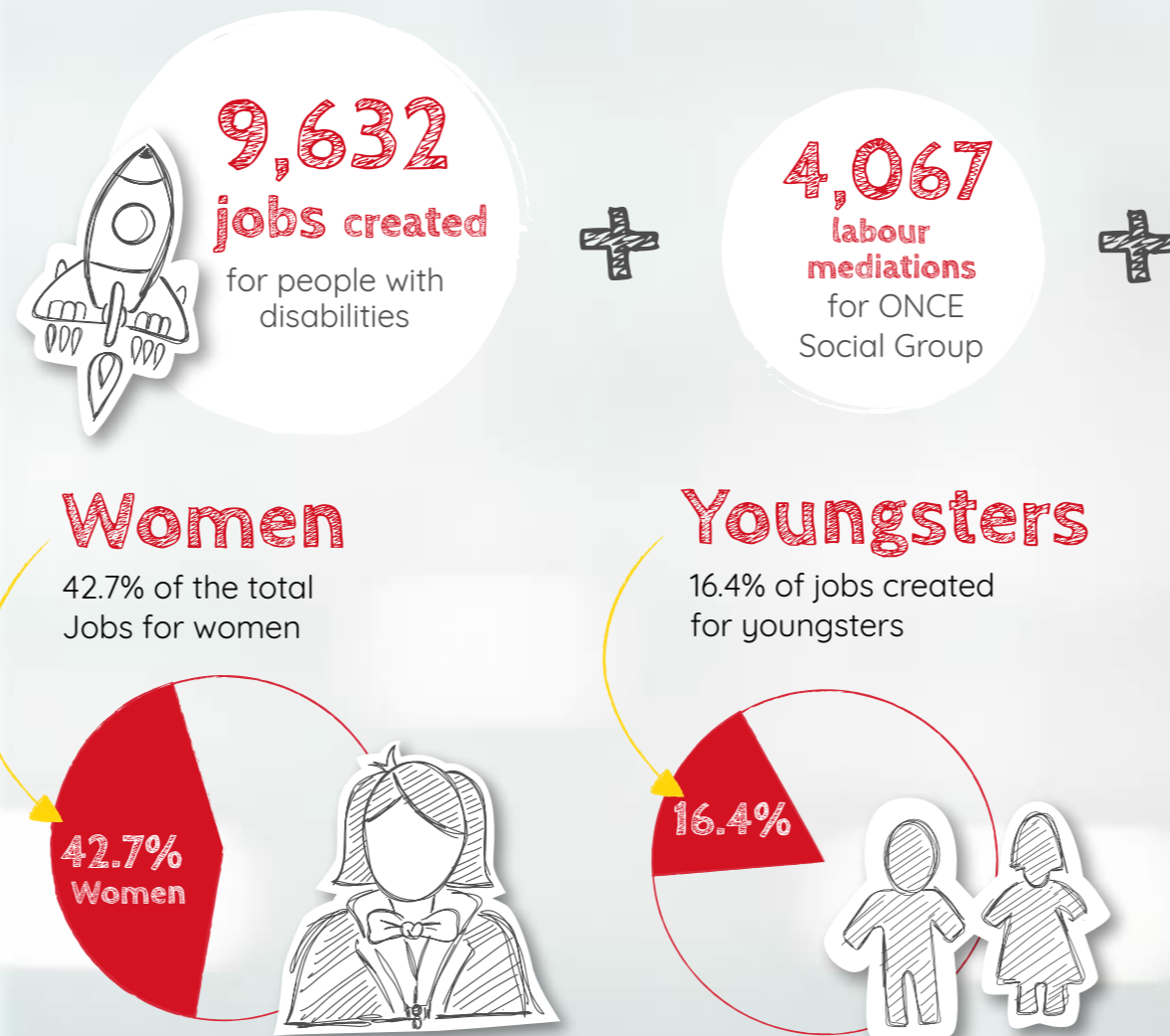
# Grants



# Training



# Employment

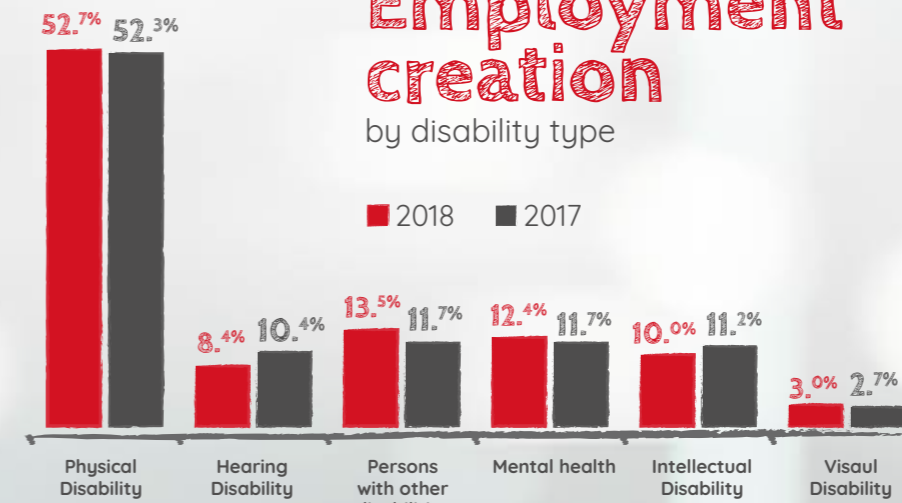


**64 entrepreneurs**

have started up their business projects thanks to the support of the ONCE Foundation

and also... **609 occupational placements** supported

## Employment creation by disability type



**Job Bank**

**266,180** job seekers with disabilities

**29,208** Persons with disabilities served through orientation interviews, mentoring, assessment or competence development

**8,664** offers form companies

**22,708** jobs offered by companies

**40,800** candidates submitted to job offers

**Scholarships for University Students with disabilities**

**859**

Grants for **internships in companies** in collaboration with CRUE

**290**

**Other grants** (inclusive campus, Erasmus +, summer scientific camps, etc)

**251**

**Scholarships for youngsters with intellectual disability:** program developed in collaboration with 21 universities, which are providing a specific degree for youngsters with intellectual disability

**228**

**Scholarships for postgraduate studies, international mobility, and studies and sports**

**90**



**1,109** women victims of gender-based violence registered

**498** received job orientation

**116** got a job